



正方科技

About Company

Zhengzhou R-Founder Technology Co., Ltd. established in 2005, is an expert manufacturer of Lithium Battery Module and Lithium Battery Pack, located in Hi-tech Zone, Zhengzhou, China.

Through nearly 10 years' hard research, design and development, R-Founder accumulated much experience in Lithium Battery Management System, and mastered many core technologies in this field. With the booming of our company, we introduced precise SMT machinery, Automated Optical Inspection instruments, as well as assembly lines, all of these enable us constantly to supply customers with superior quality products and satisfying services.

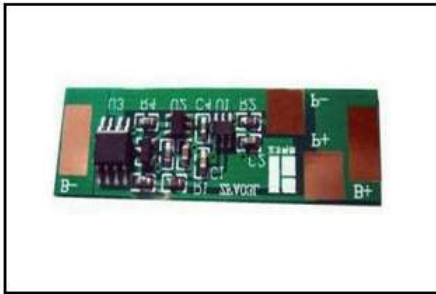
Main products our company deal in are related to Electric Module and Lithium Battery, the following ones are for your reference:

- 1. Protection Circuit Module, our PCM/PCB are well applied to battery packs of Li-ion battery, Li-Co battery, Li-Mn battery and Li-Iron (LiFePO₄) battery. Perfectly designed and aimed to each different use and the unique specifications of Li-battery packs, with the function of over charge, over discharge, over current, over heat, short circuit protection, and voltage balancing in the late period of charging to ensure the safe operation of battery pack, and prolong its cycle life.**
- 2. Lithium Battery Pack, to improve the performance of Li-battery packs, our company adopt the imported Li-ion battery cells and domestic first-class LiFePO₄ Batteries.**
- 3. Lithium Battery Charger, we can make the customized battery chargers according to your battery capacity and charging time.**
- 4. Watt Meter, it can accurately measure the parameters of your electric device, protecting components from damaging.**
- 5. HID Flashlight, an ideal for military, border patrol, fire departments, marine/coast guard, detector, police, rescuers, and other public and private security organizations.**

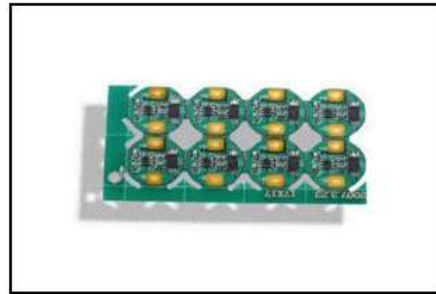
Innovative engineers, experienced staff members, modern equipments, strict management and strong responsibility make us offering reliable products at competitive prices and also the best service to meet customer's needs, receiving good reputation from world's corporations.

If you are interested in our company, please don't hesitate to contact us, and get the news of our latest products. You are welcome to visit our website at www.zf66.com for more information!

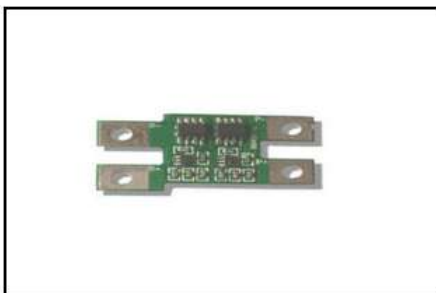
● PCM for Single Cells Lithium Battery



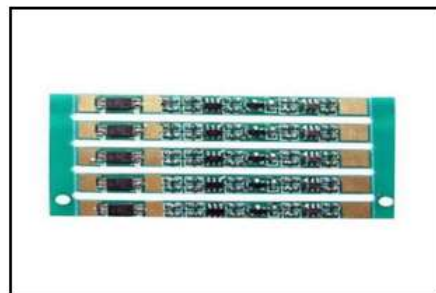
Name: PCM for Single Cell LiFePO₄ Battery
Model No.: ZFA03PR
Size: 45 × 13 × 2.7mm



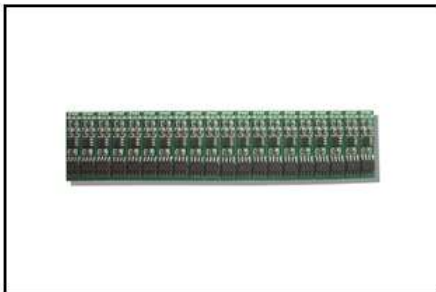
Name: Round PCM for Single Cell Li Battery
Model No.: ZFA03LR-04
Size: 16mm



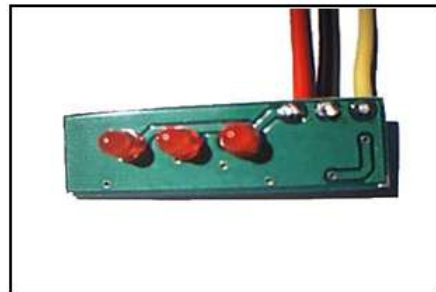
Name: Single Cell Battery PCM(Double Protection)
Model No.: ZFA03KD-S
Size: 38 × 21.6 × 2.7mm



Name: PCM for 3.7V Li Battery
Model No.: ZFA03LR09T
Size: 52 × 5 × 2.7mm



Name: PCM for 3.7V Li Battery
Model No.: ZFA03LR
Size: 25 × 5.6 × 2.7mm



Name: PCM for Miner's Lamp
Model No.: ZFA03LR-02
Size: 35.8 × 10.8 × 2.7mm

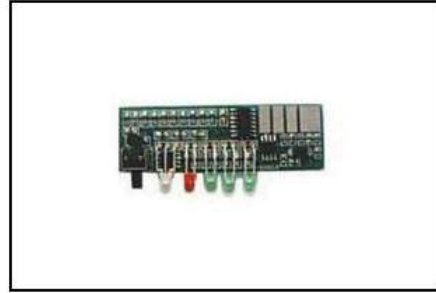


Name: Double Cells Battery PCM
Model No.: ZFA03LR-03
Size: 15 × 6 × 2.7mm

● PCM for Double Cells Lithium Battery



Name: Double Cells Battery PCM
Model No.: ZFB03LR
Size: 40 × 25 × 5mm



Name: Double Cells Battery PCM with LED Display
Model No.: ZFB03LR-LED
Size: 80 × 20 × 5mm



Name: PCM for 7.4V Li Battery
Model No.: ZFB03LR-05
Size: 35 × 10 × 2.7mm

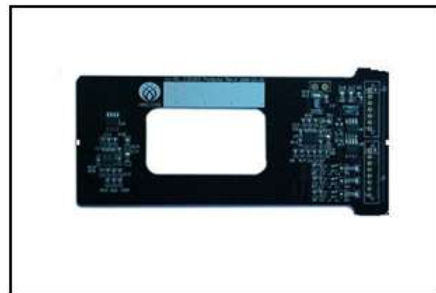


Name: PCM for 7.4V Li Battery
Model No.: ZFB05LR-G07A
Size: 40 × 8 × 2.7mm

● PCM for 3 Cells Lithium Battery



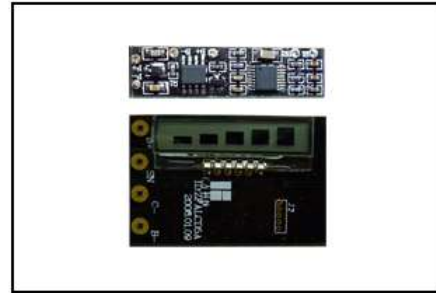
Name: PCM for 10.8V Lithium Battery
Model No.: ZFC10LR-03A
Size: 28 × 46 × 2.7mm



Name: PCM for 3 Cells Lithium Battery
Model No.: ZFC05LRE01A
Size: 59 × 23 × 2.7mm



Name: PCM for 3 Cells Lithium Battery
Model No.: ZFC03LR
Size: 18 × 31 × 3.8mm



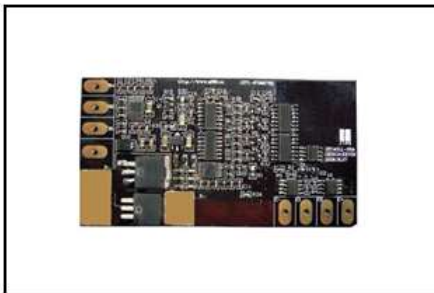
Name: PCM for 3 Cells Battery with LCD Display
Model No.: ZFC03LR-03ALCD
Size: 40 × 25.5 × 5.7mm



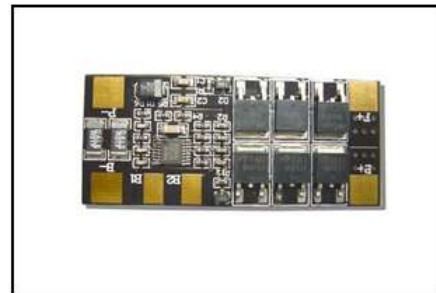
Name: PCM for 10.8V Dynamic Battery
Model No.: ZFC10LR-11E
Size: 38 × 44.5 × 7.5mm



Name: PCM for 3 Cells Dynamic Battery
Model No.: ZFC20LR-11A
Size: 52.3 × 40.5 × 7.5mm



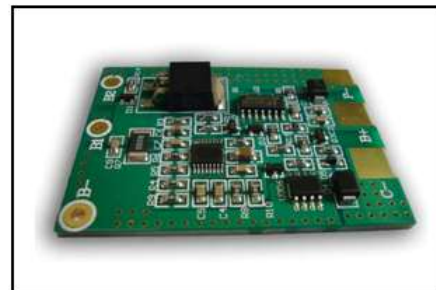
Name: PCM for 10.8V Dynamic Battery
Model No.: ZFC40LL-03A
Size: 88 × 47 × 6mm



Name: PCM for 10.8V Dynamic Battery
Model No.: ZFC15LL-08A
Size: 60 × 26 × 3.5mm



Name: PCM for 3 Cells Dynamic Battery
Model No.: ZFC15LLG03A
Size: 55 × 40.5 × 4mm

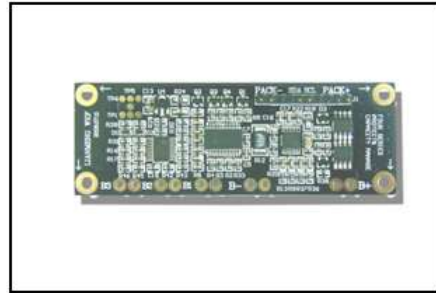


Name: PCM for 3 Cells Dynamic Battery
Model No.: ZFC10LRB-11A
Size: 55 × 40 × 6.5mm

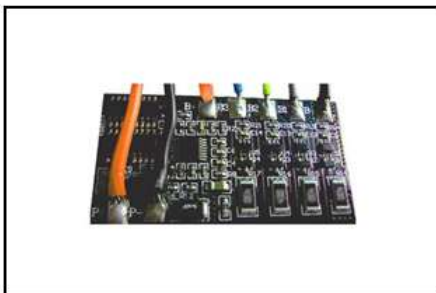
● PCM for 4 Cells Lithium Battery



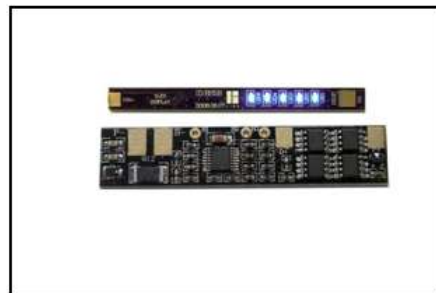
Name: PCM for 14.4V Lithium Battery
Model No.: ZFD10LR-03A
Size: 28 × 46 × 2.7mm



Name: 4 Cells PCM with Balance & LED Display
Model No.: ZFD10S
Size: 87 × 30 × 4mm



Name: PCM for 14.8V Battery with Balance
Model No.: ZFD06LRE-11A
Size: 56.4 × 29 × 3.7mm



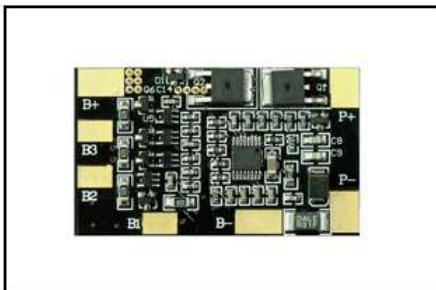
Name: 4 Cells PCM with LED Display
Model No.: ZFD08LR-03SLED
Size: 62 × 13 × 2.7mm; 79.7 × 7 × 3.2mm



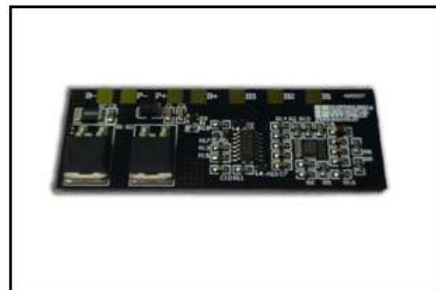
Name: PCM for 4 Cells Battery
Model No.: ZFD10LRD03D
Size: 70.9 × 46.6 × 6.7mm



Name: PCM for 4 Cells Battery with Balance I
Model No.: ZFD20LRE11A
Size: 56.4 × 29 × 3.7mm



Name: PCM for 4 Cells Battery with Balance II
Model No.: ZFD06LRE-11A
Size: 50 × 30 × 3.5mm



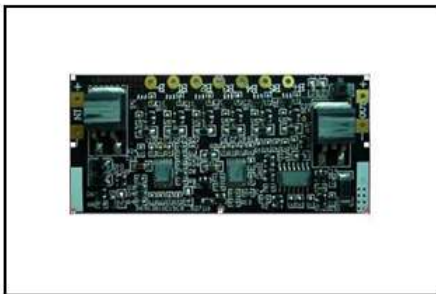
Name: PCM for 4 Cells Battery with Balance III
Model No.: ZFD30LRH11A
Size: 30 × 79.8 × 6.5mm

● PCM for 5 Cells Lithium Battery

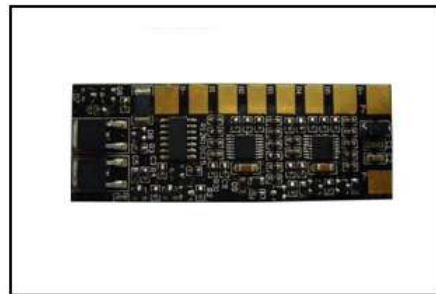


Name: PCM for 5 Cells Lithium Battery
Model No.: ZFE20LL-05A
Size: 56.5 × 51 × 4mm

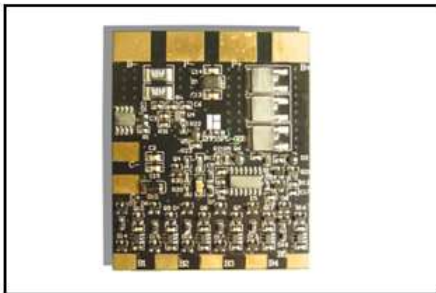
● PCM for 6 Cells Lithium Battery



Name: PCM for 6 Cells Lithium Battery I
Model No.: ZFF05LRE01A
Size: 82 × 35 × 6.2mm

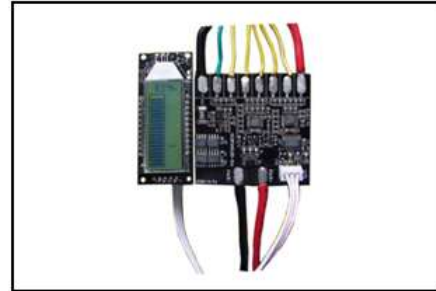


Name: PCM for 6 Cells Lithium Battery II
Model No.: ZFF05LR-01A
Size: 68 × 25 × 4mm



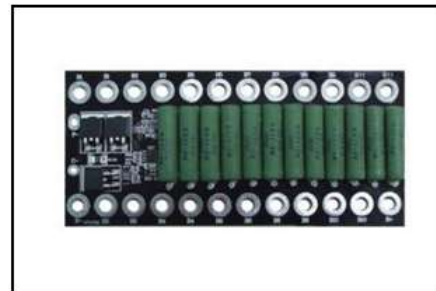
Name: Balanced PCM for 6 Cells LiFePO₄ Battery
Model No.: ZFF15PL
Size: 54 × 65 × 4mm

- **PCM for
7 Cells
Lithium Battery**



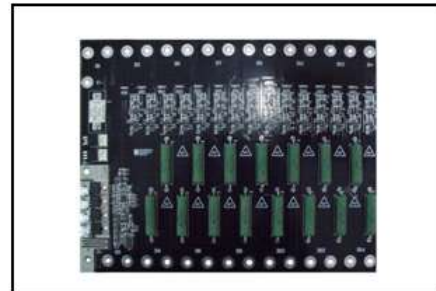
Name: 7 Cells PCM with Energy Management
Model No.: ZFG05LRD-01A
Size: 54 × 52.5 × 10mm; 62 × 25.5 × 12.5mm

- **PCM for
12 Cells
Lithium Battery**



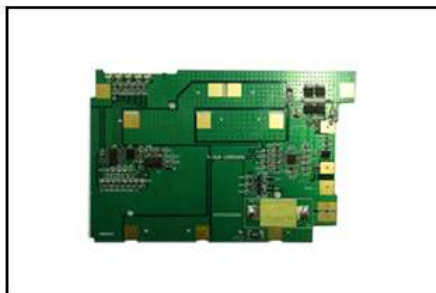
Name: PCM for 12 Cells LiFePo₄ Battery
Model No.: ZFL20PRE0704A
Size: 142 × 65.5 × 13.5

- **PCM for
15 Cells
Lithium Battery**



Name: PCM for 15 Cells LiFePo₄ Battery
Model No.: ZFO40PRE0704A
Size: 250 × 149 × 12.5mm

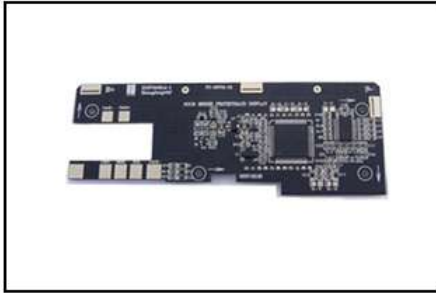
- **PCM for Camera Battery**



Name: 4 Cells PCM for Camera Battery I
Model No.: ZFD10LRD06H
Size: 134 × 87 × 3mm

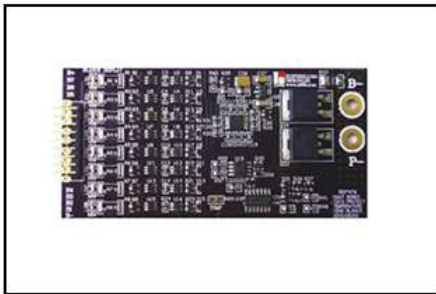


Name: 4 Cells PCM for Camera Battery II
Model No.: ZFD10SLRA
Size: 130 × 47.6 × 10mm

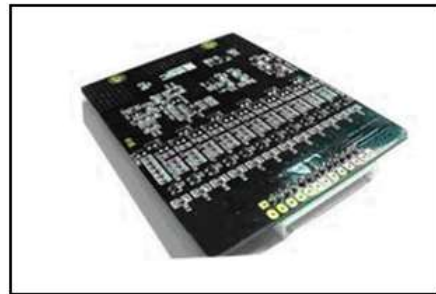


Name: 4 Cells PCM for Carema Battery III
Model No.: ZFD10LRA06B
Size: 130 × 47.6 × 4mm

● PCM for E-bike Battery



Name: PCM for 24V LiFePO₄ Battery
Model No.: ZFH25LL09A-E
Size: 100 × 50 × 7.2mm

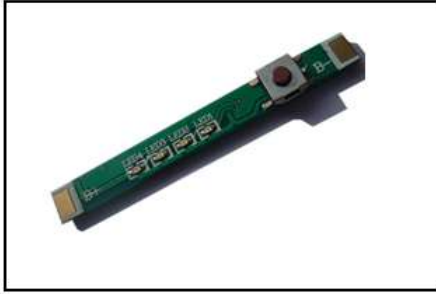


Name: PCM for 36V LiFePO₄ Battery
Model No.: ZFL20PRE0704A-E
Size: 142 × 65.5 × 13.5mm



Name: PCM for 48V LiFePO₄ Battery
Model No.: ZFO40PRE0704A-E
Size: 250 × 194 × 12.5mm

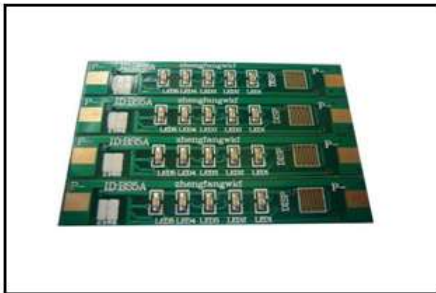
● LED and LCD Indicator



Name: 4 LED Indicator for Battery Capacity
Model No.: ZFB05B
Size: 55 × 5 × 6mm



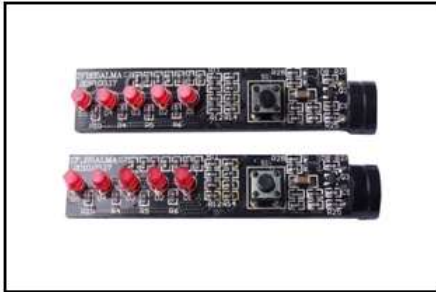
Name: 5 LED Indicator
Model No.: ZFB55B
Size: 79.7 × 7 × 3.2mm



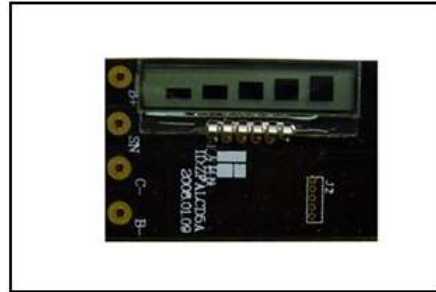
Name: LED Indicator for 4 Cells Battery
Model No.: ZFB5S
Size: 60.4 × 10.2 × 3.6mm



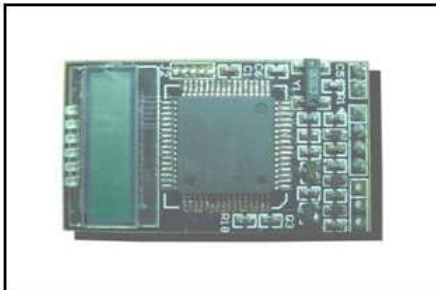
Name: LED Indicator for 16 Cells Battery
Model No.: ZFB55HB
Size: 60.1 × 15.6 × 3.6mm



Name: LED Indicator with Alarm Buzzer
Model No.: ZFB55ALMA
Size: 67 × 14.3 × 15.4mm



Name: LCD Indicator
Model No.: ZFALCD5A
Size: 40 × 25.5 × 5.7mm



Name: Smart LCD Indicator
Model No.: ZFSMBUSLCDA
Size: 25 × 45 × 5mm

CONTACT

Bruce Wang

Email: brucewang.china@hotmail.com

Tel./Fax.: 86-371-67992783

Mobile: 86-13607673697

Web: www.zf66.com